

Clifford Way , Maidstone ME16 8GF

- Immaculately Presented Throughout
 - Allocated Parking
 - Quiet Development
 - Access To Riverside Walks
- Walking Distance To Maidstone Town Centre
- Within Reach Of Maidstone West & East Stations
 - 139 Year Lease
 - Residents Gym

Asking Price £190,000 Leasehold

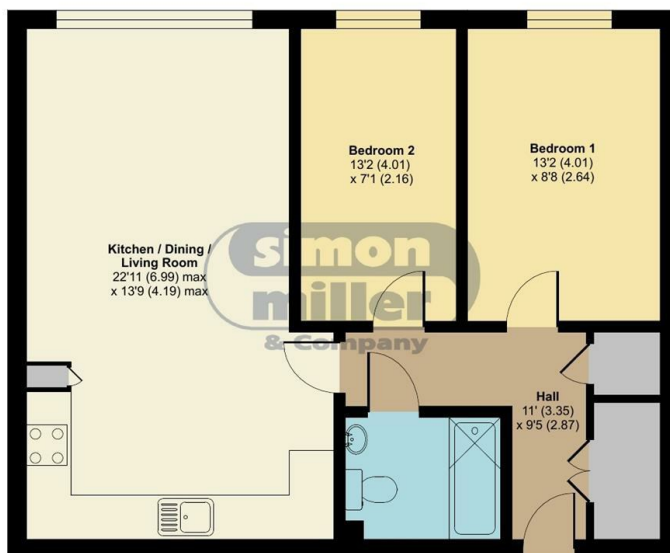
Local Authority Maidstone
Borough Council
Council Tax Band D
EPC Rating B



Clifford Way, Maidstone, ME16

Approximate Area = 655 sq ft / 60.8 sq m

For identification only - Not to scale



SECOND FLOOR



Floor plan produced in accordance with RICS Property Measurement Standards incorporating International Property Measurement Standards (IPMS2 Residential). © nichecom 2022. Produced for Simon Miller & Company. REF: 903017

Maidstone & The Weald Office

11 Colman House, Colman Parade, King
Street, Maidstone, Kent, ME14 1DN

Contact

01622 691255
maidstonesales@simonmiller.co.uk

Agents Note: Whilst every care has been taken to prepare these particulars, they are for guidance purposes only. All measurements are approximate and for general guidance purposes only and whilst every care has been taken to ensure accuracy, they should not be relied upon and potential buyers/tenants are advised to recheck the measurements.

